

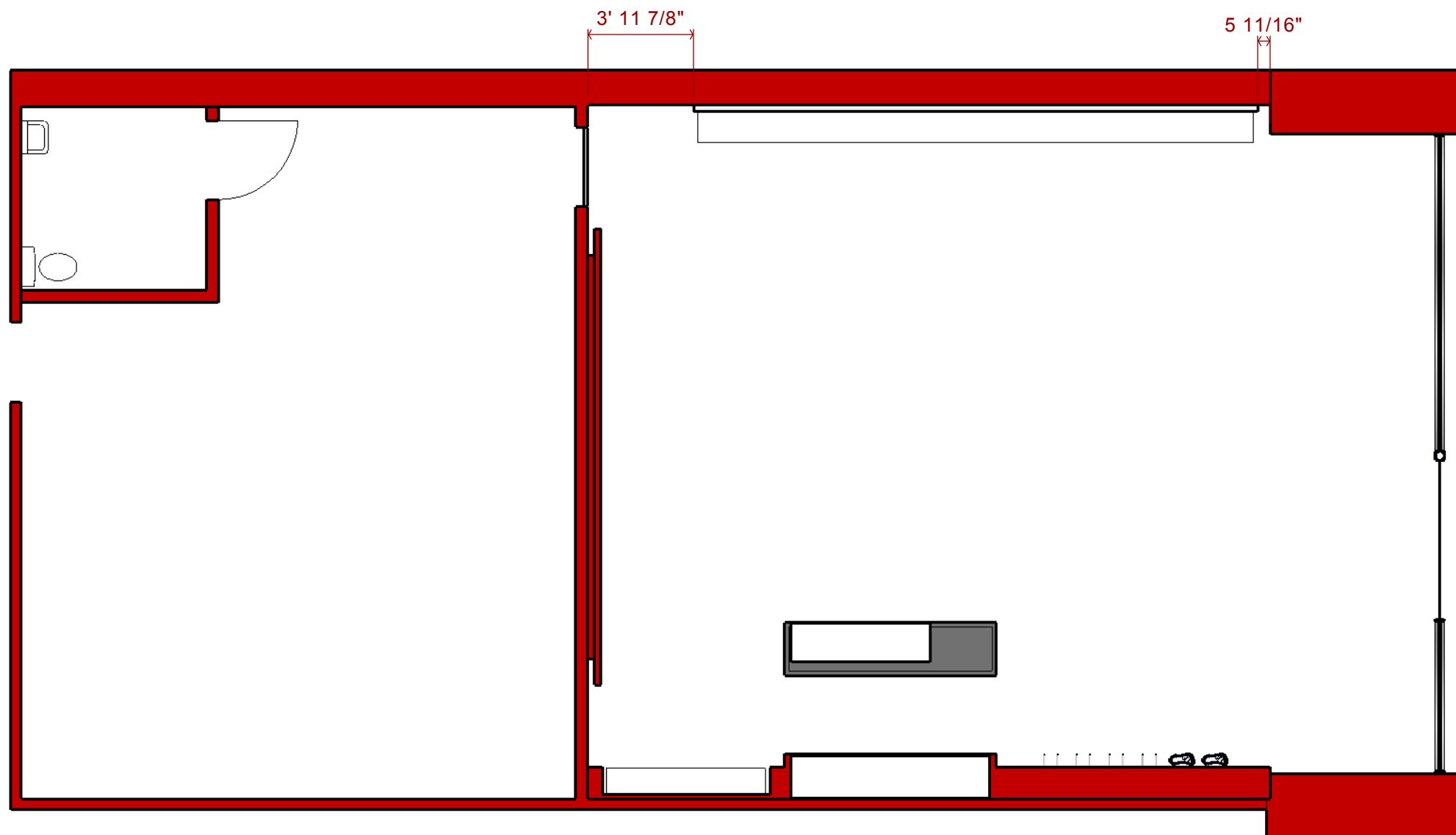


Existing Store Front

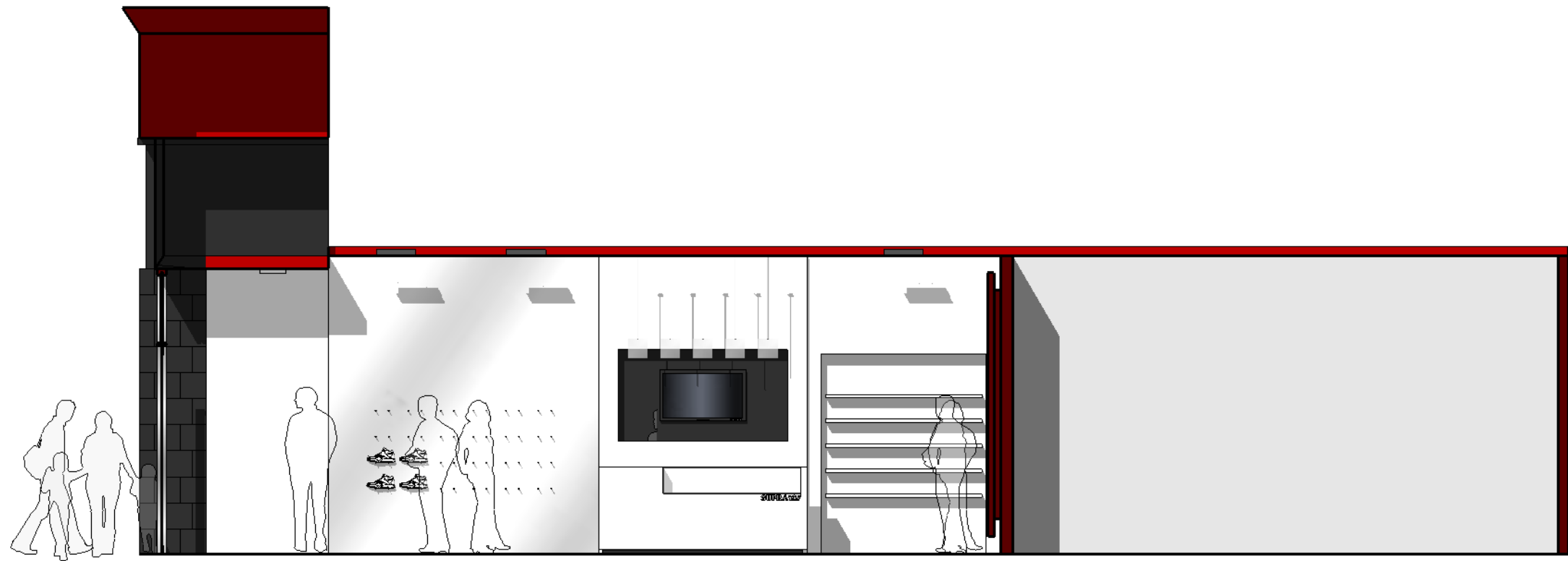


Proposed Store Front

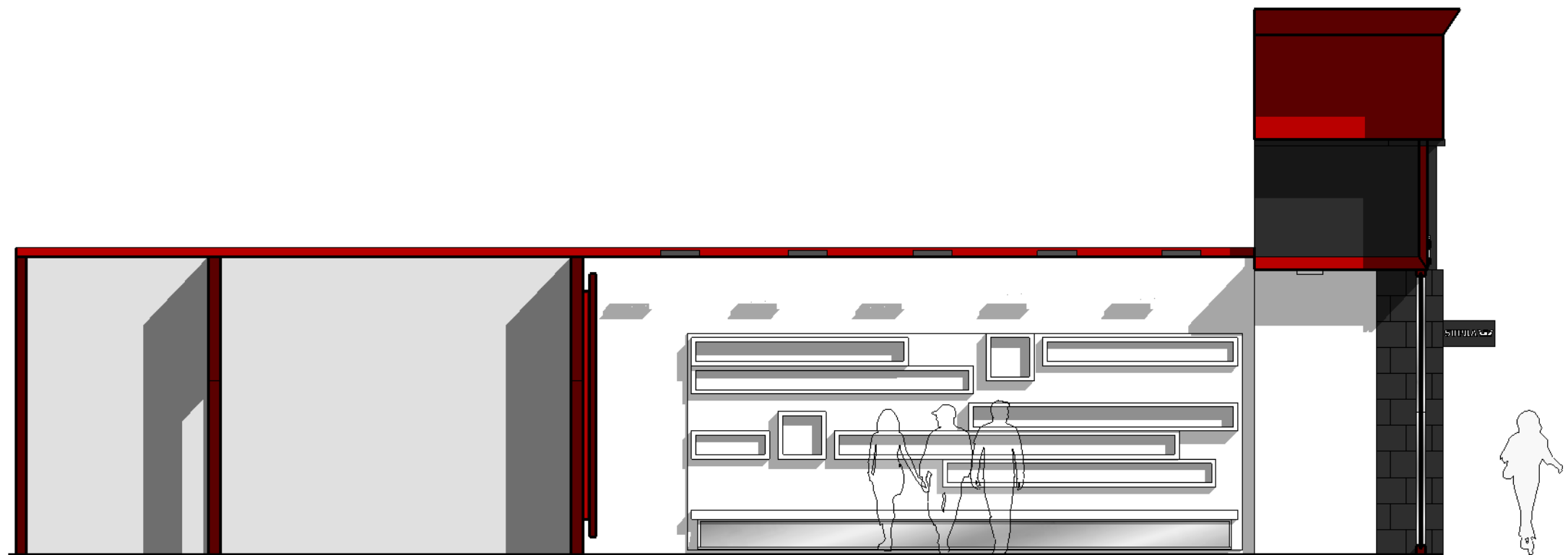




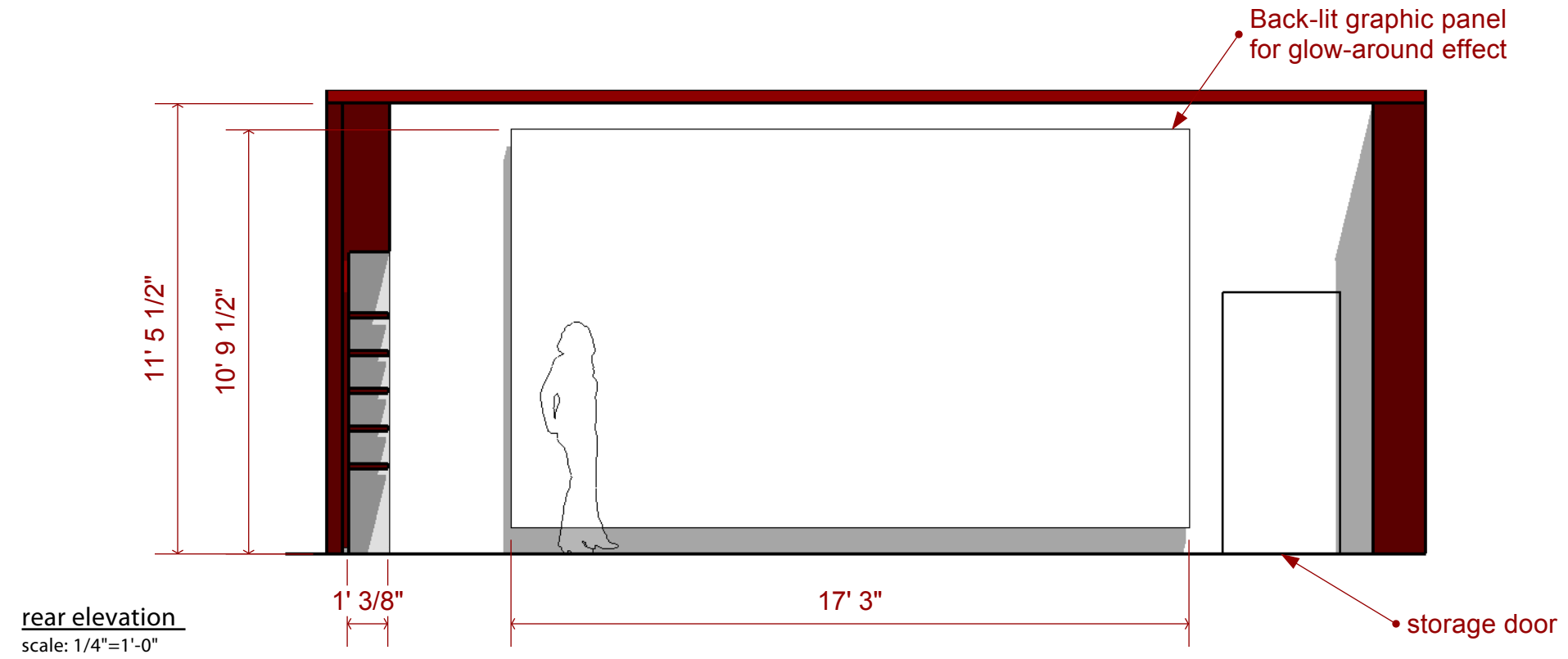
floor plan
scale: 3/16"=1'-0"



left elevation
scale: 3/16"=1'-0"



right elevation
scale: 3/16"=1'-0"



SUPRA



front view



interior persp



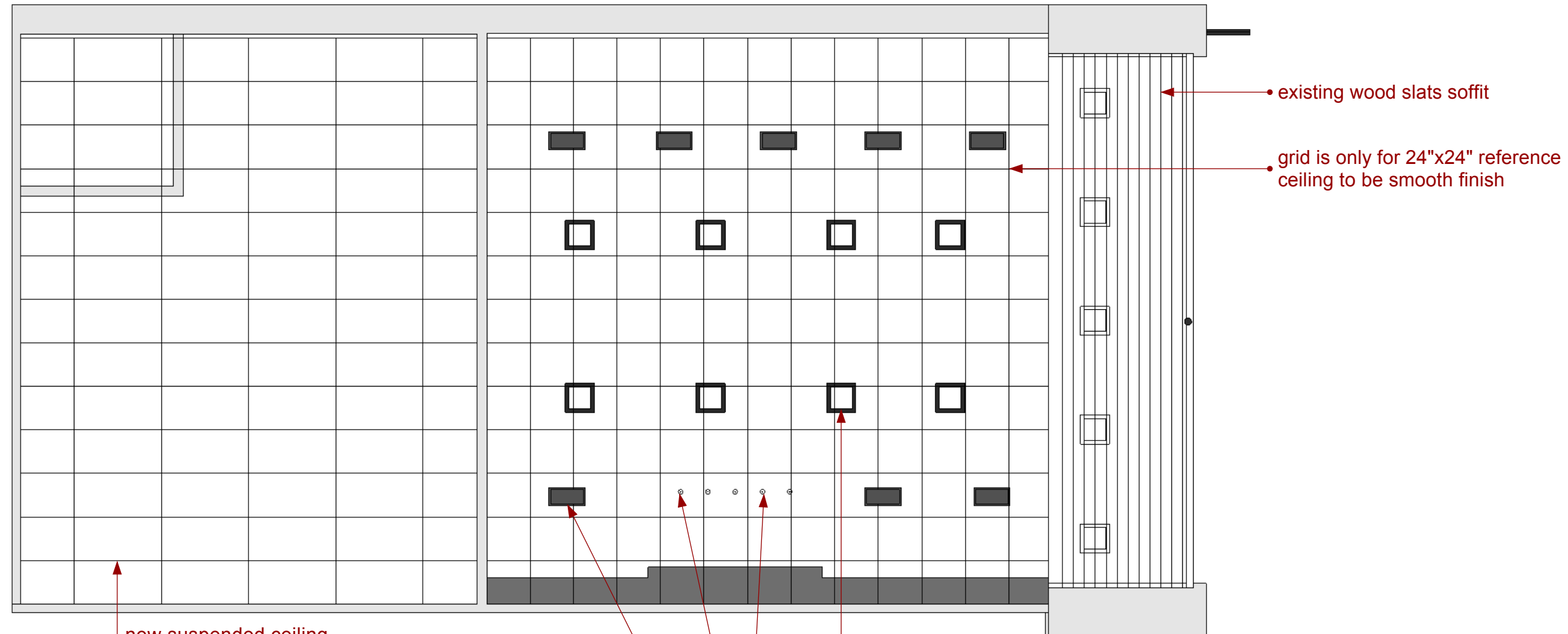
interior persp



interior persp



interior persp



ceiling plan
scale: 3/16"=1'-0"

new suspended ceiling
in storage area. provide fluorescent light fixtures
as needed

Juno 10" drop opal trim fixture (for general lighting)
http://www.junolighting.com/product_detail.asp?ino=2493&Sel_Id=2021&brand=1

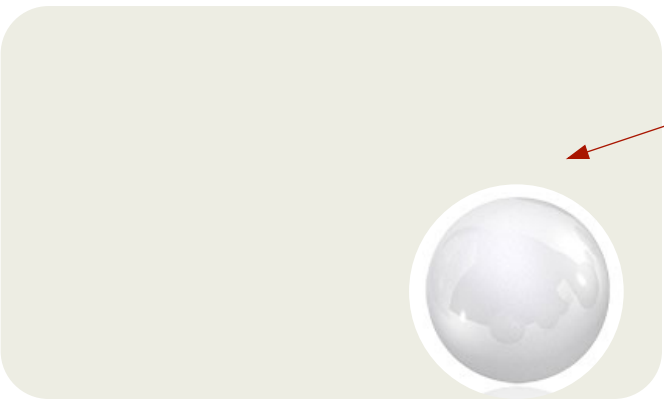
cubi 16 ceiling pendants (over cashwrap)
<http://www.leucosusa.com/products/index.php?bn=3&idL=en>

mx3-t/l-xic module (along walls for product lighting)
<http://www.dasalindustries.com/matrix/MX3-TL-XIC>



existing front wood/slats
to be dark stain

existing

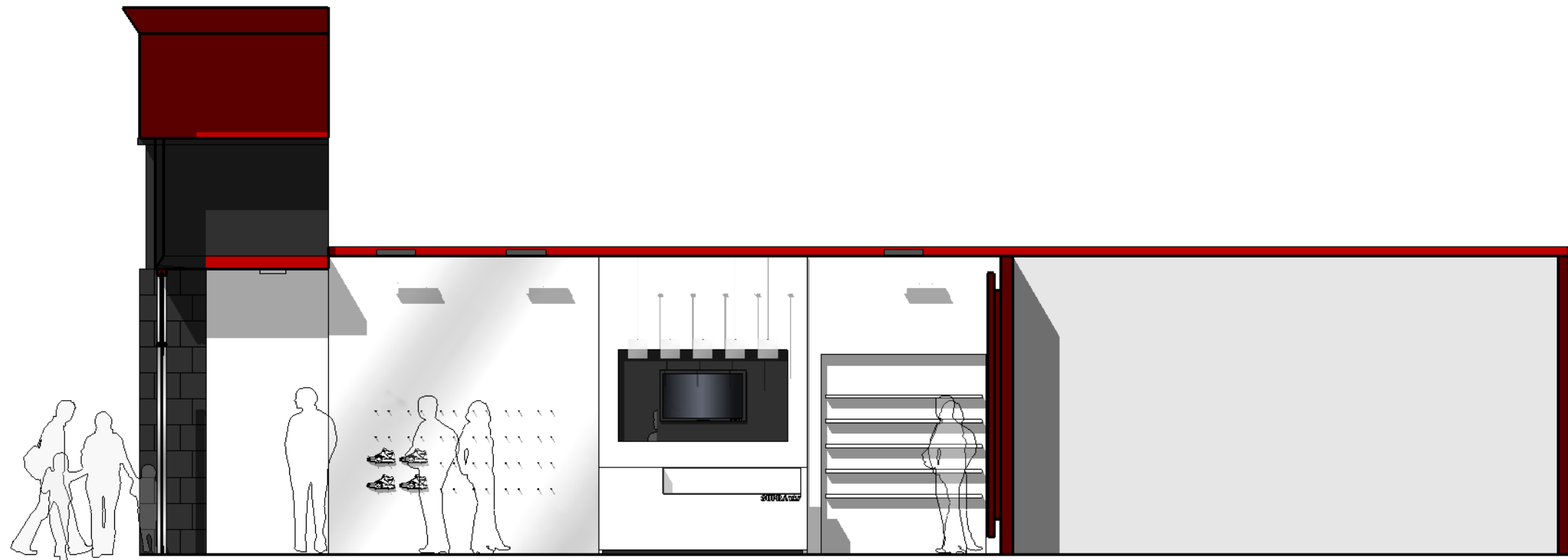


matte and gloss
white paint interior
walls

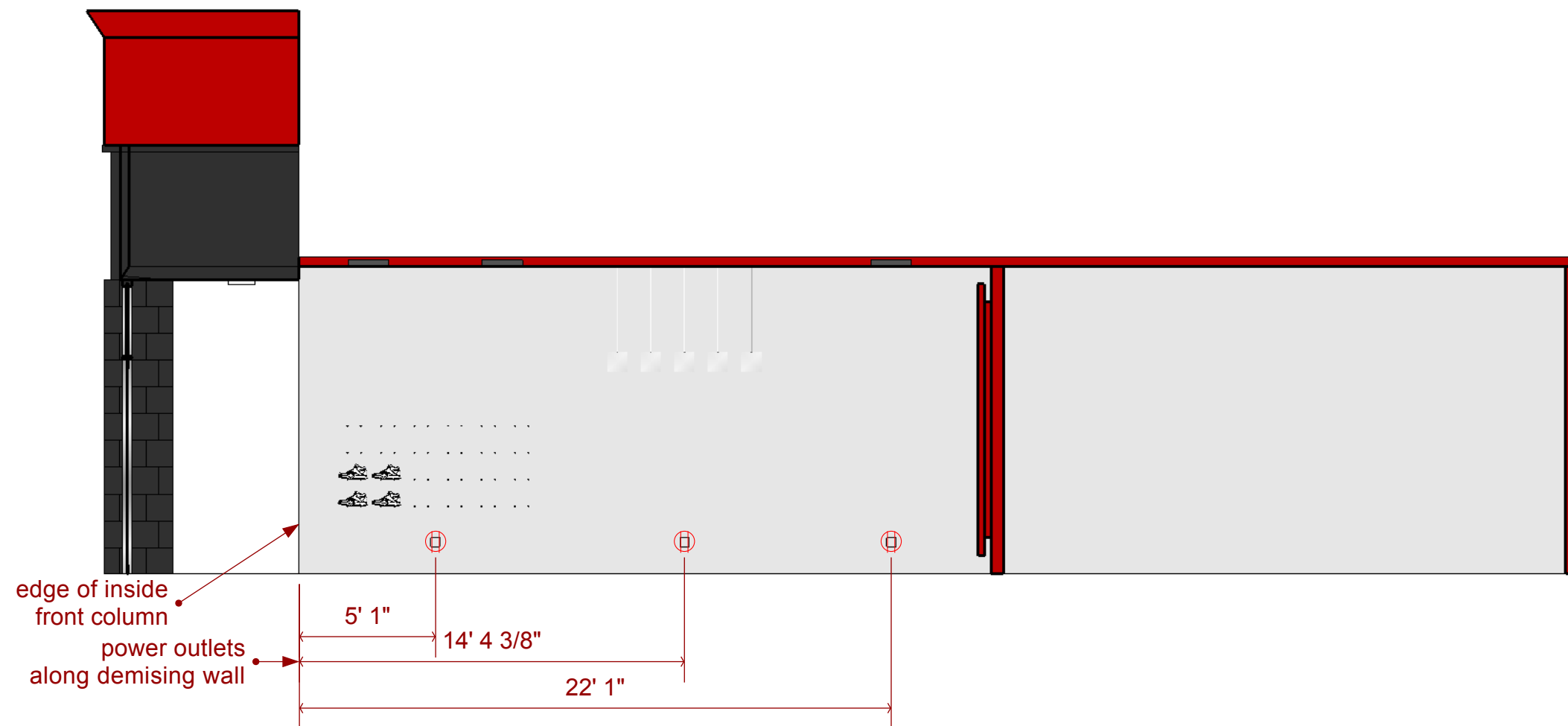


polished concrete interior floor

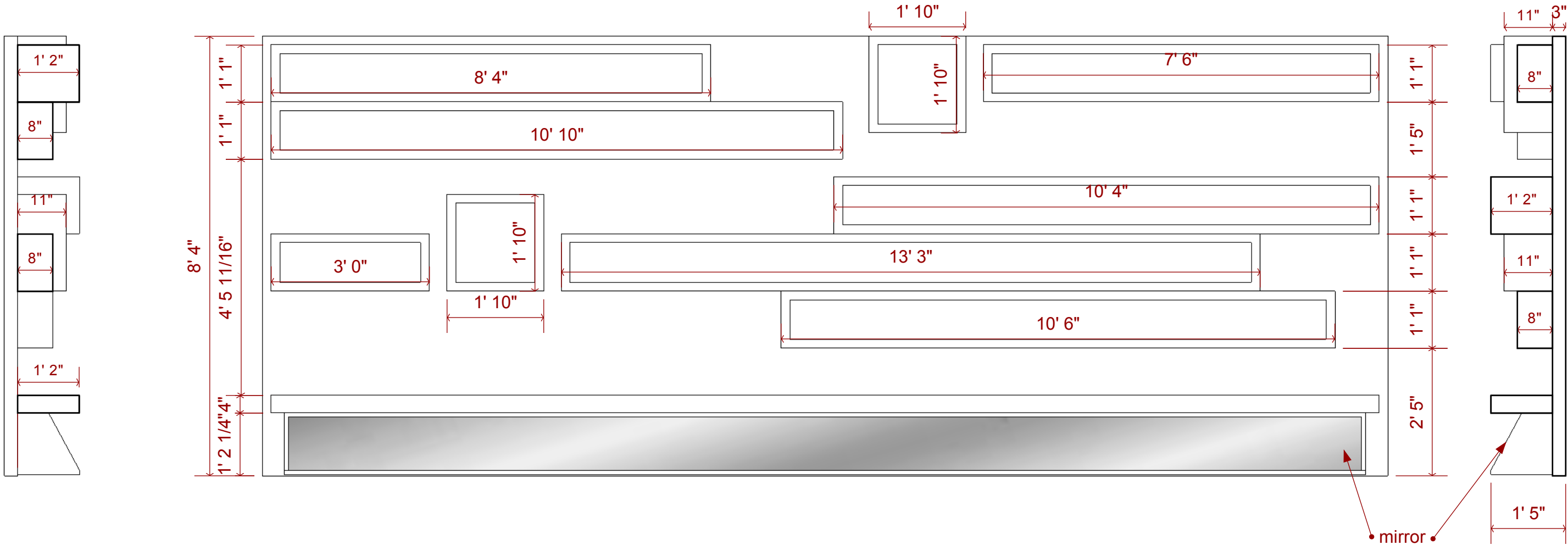


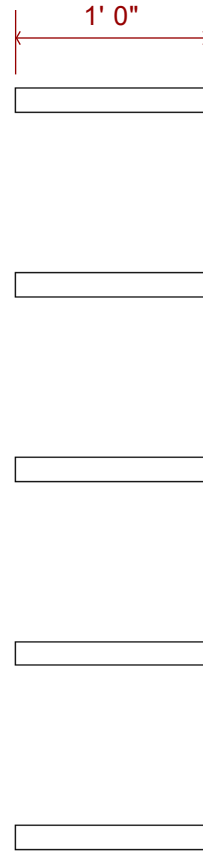
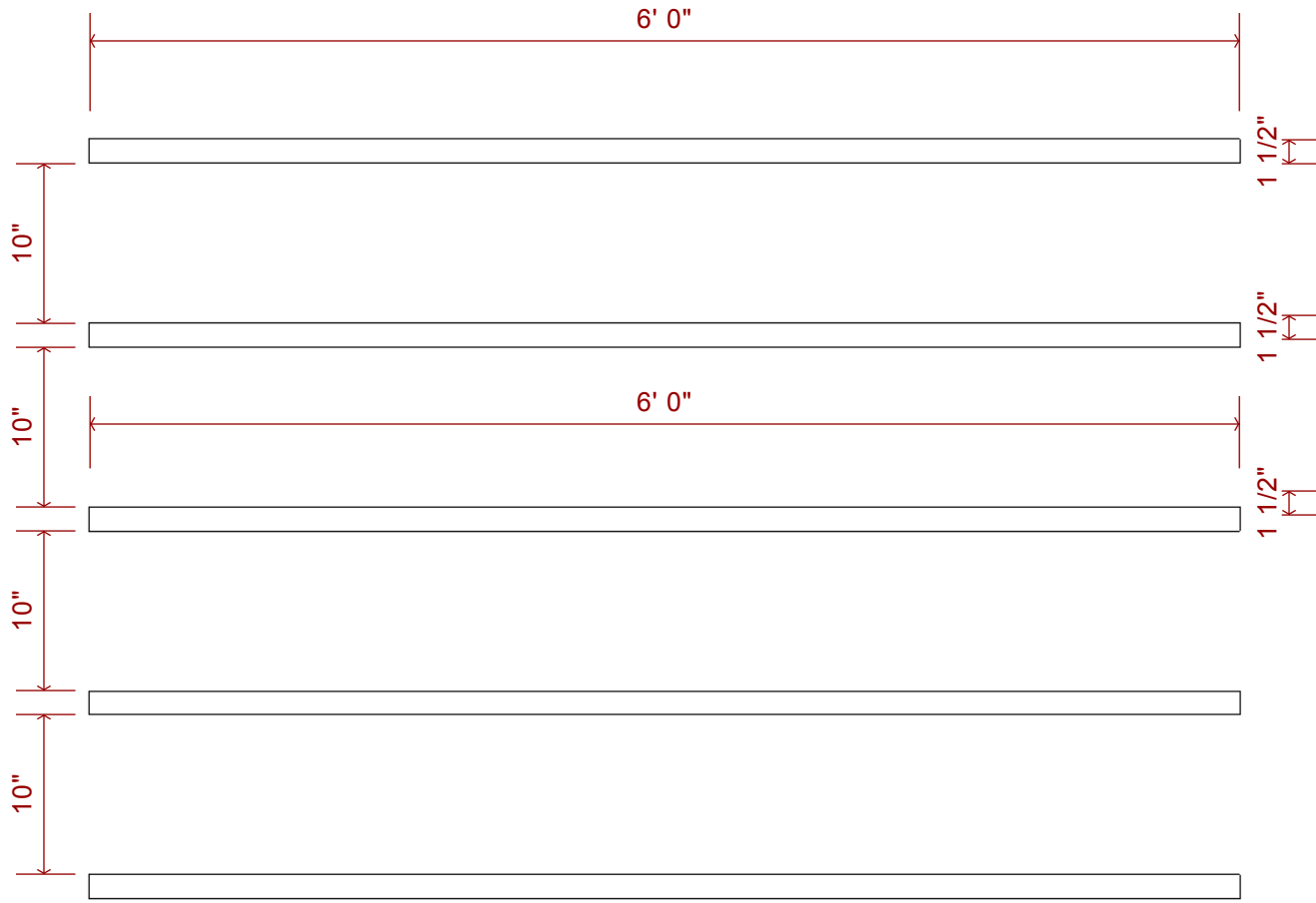


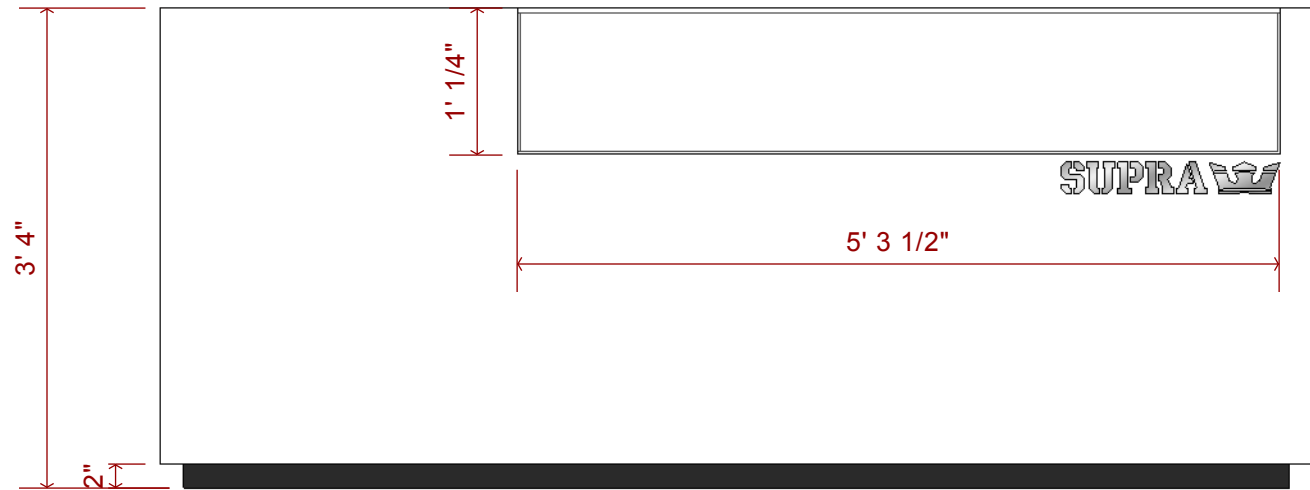
left elevation
scale: 3/16"=1'-0"



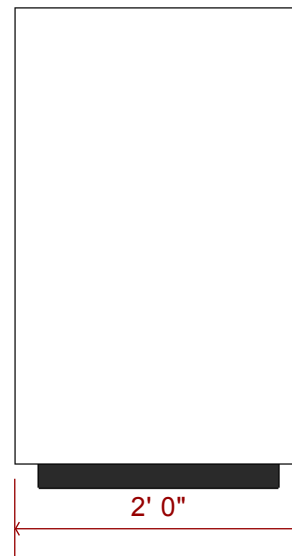
left elevation
scale: 3/16"=1'-0"



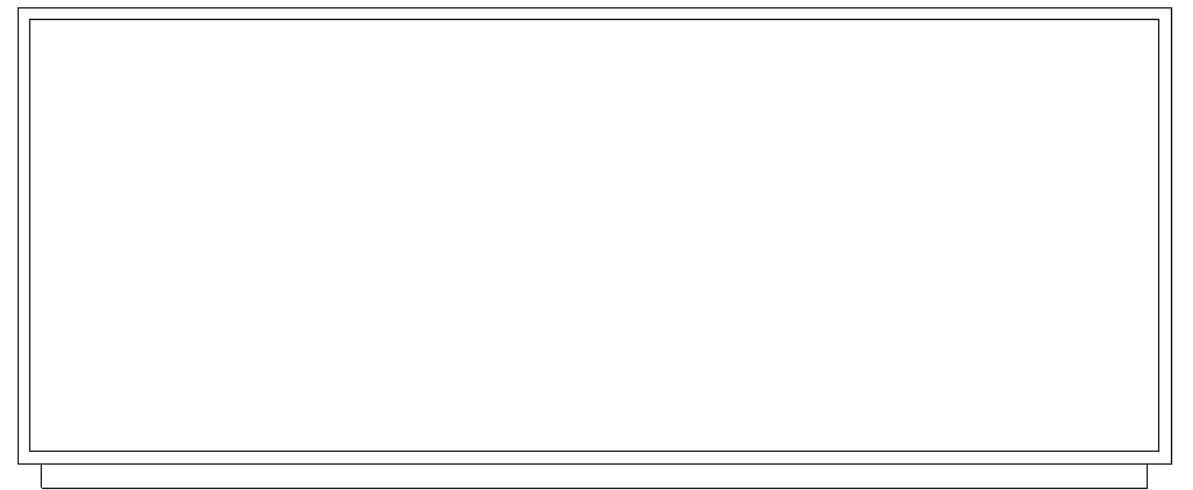




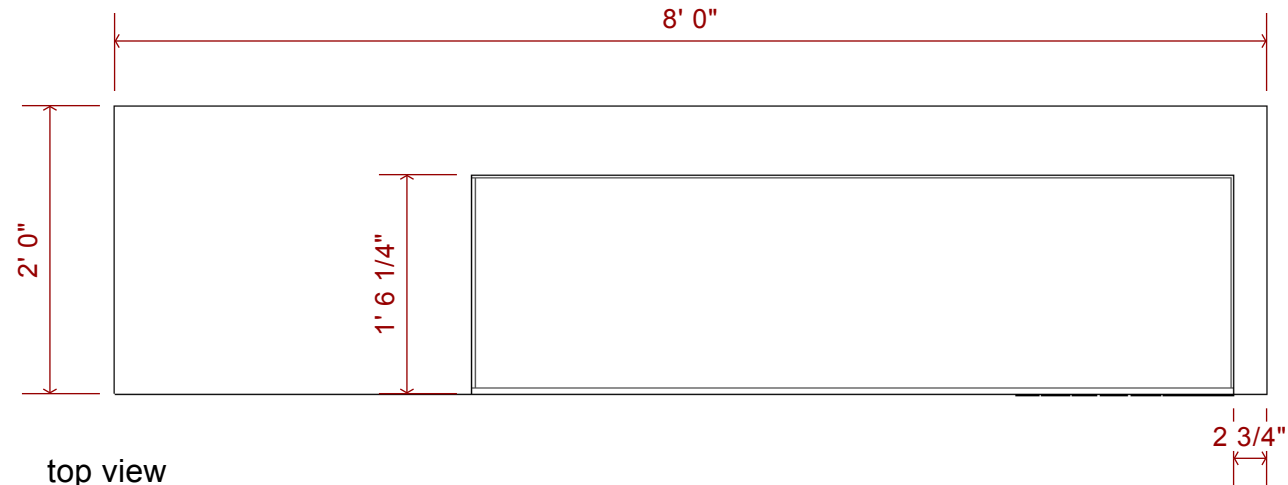
front view
scale: 3/4"



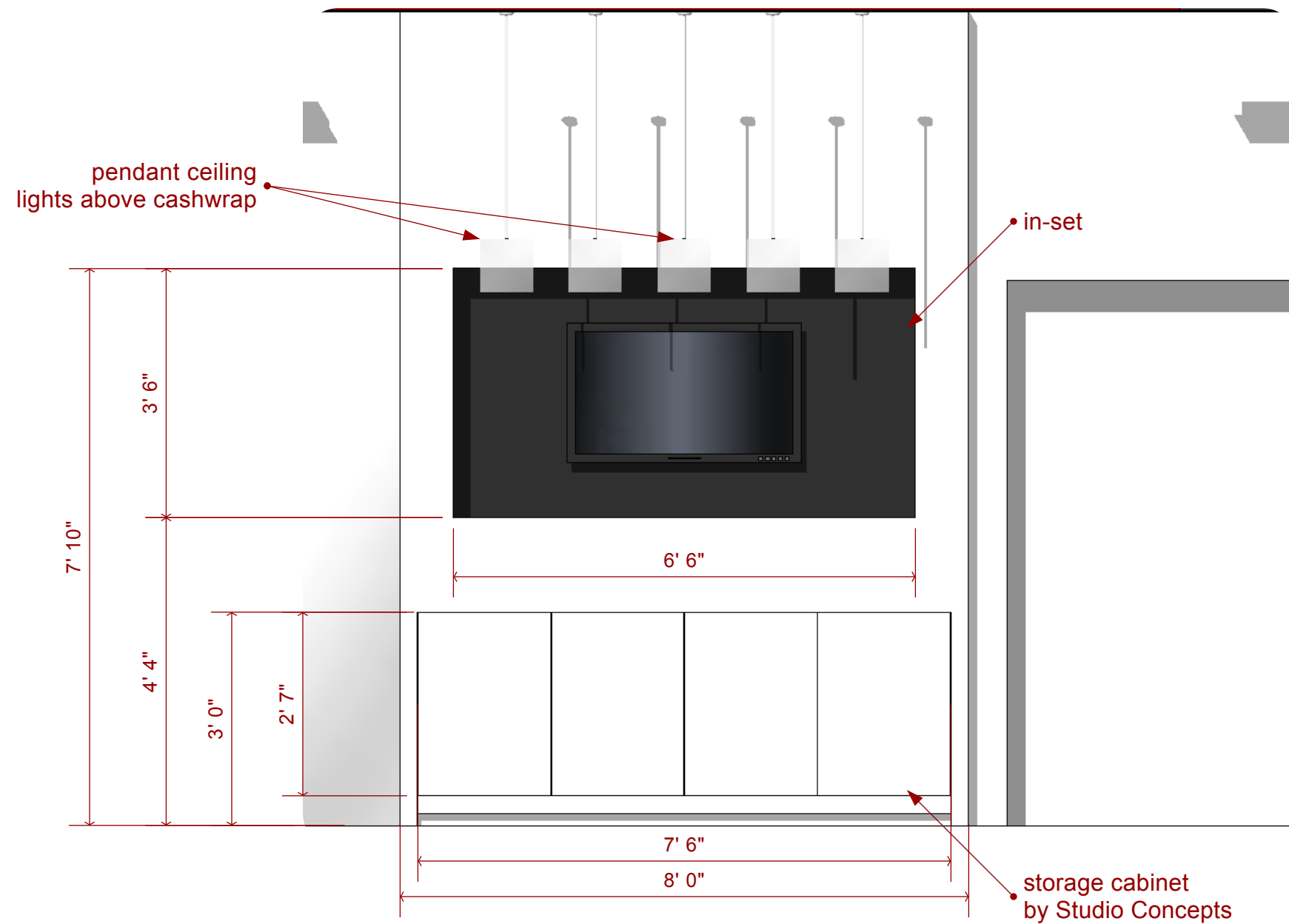
side view
scale: 3/4"



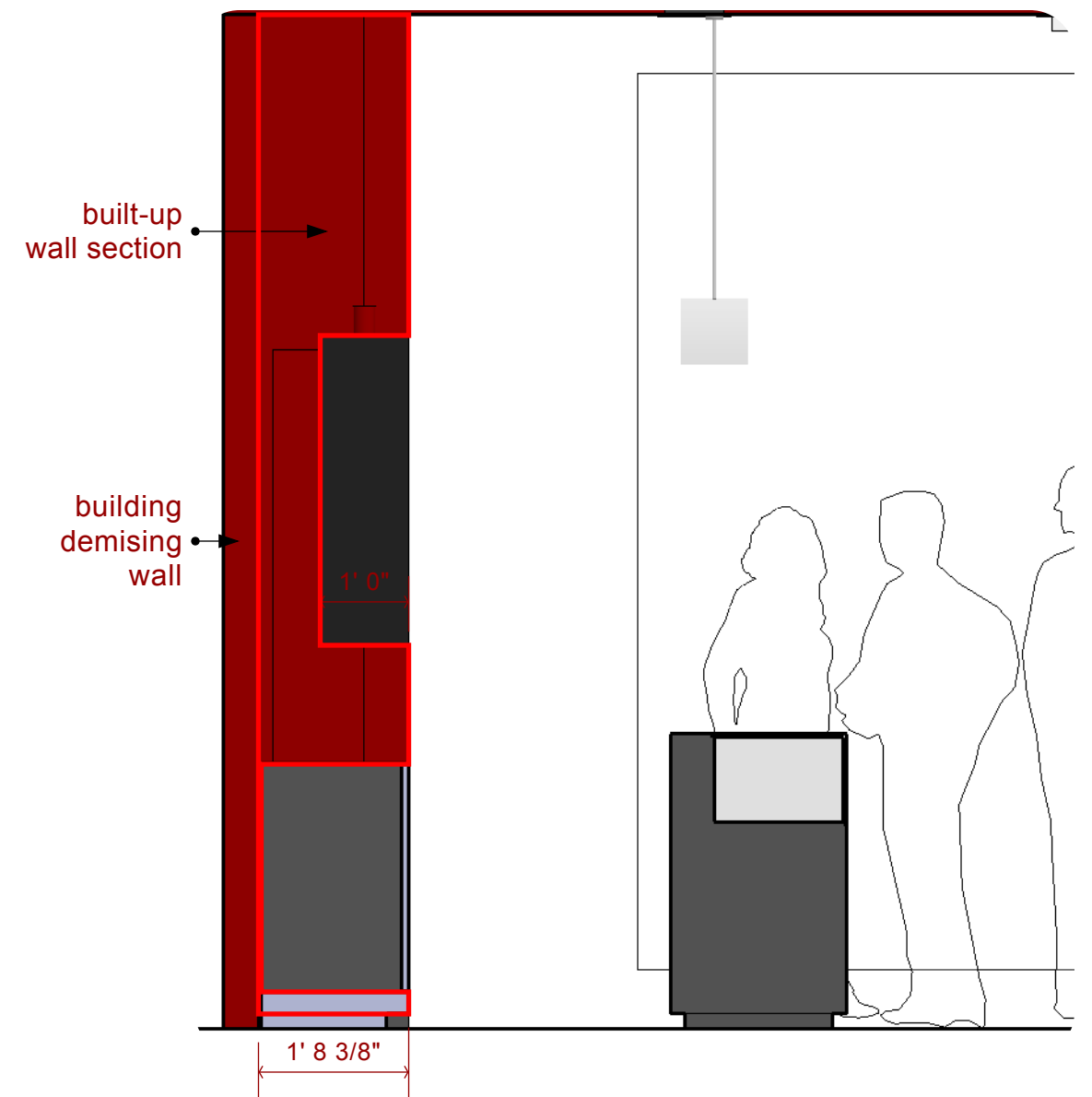
rear view
scale: 3/4"



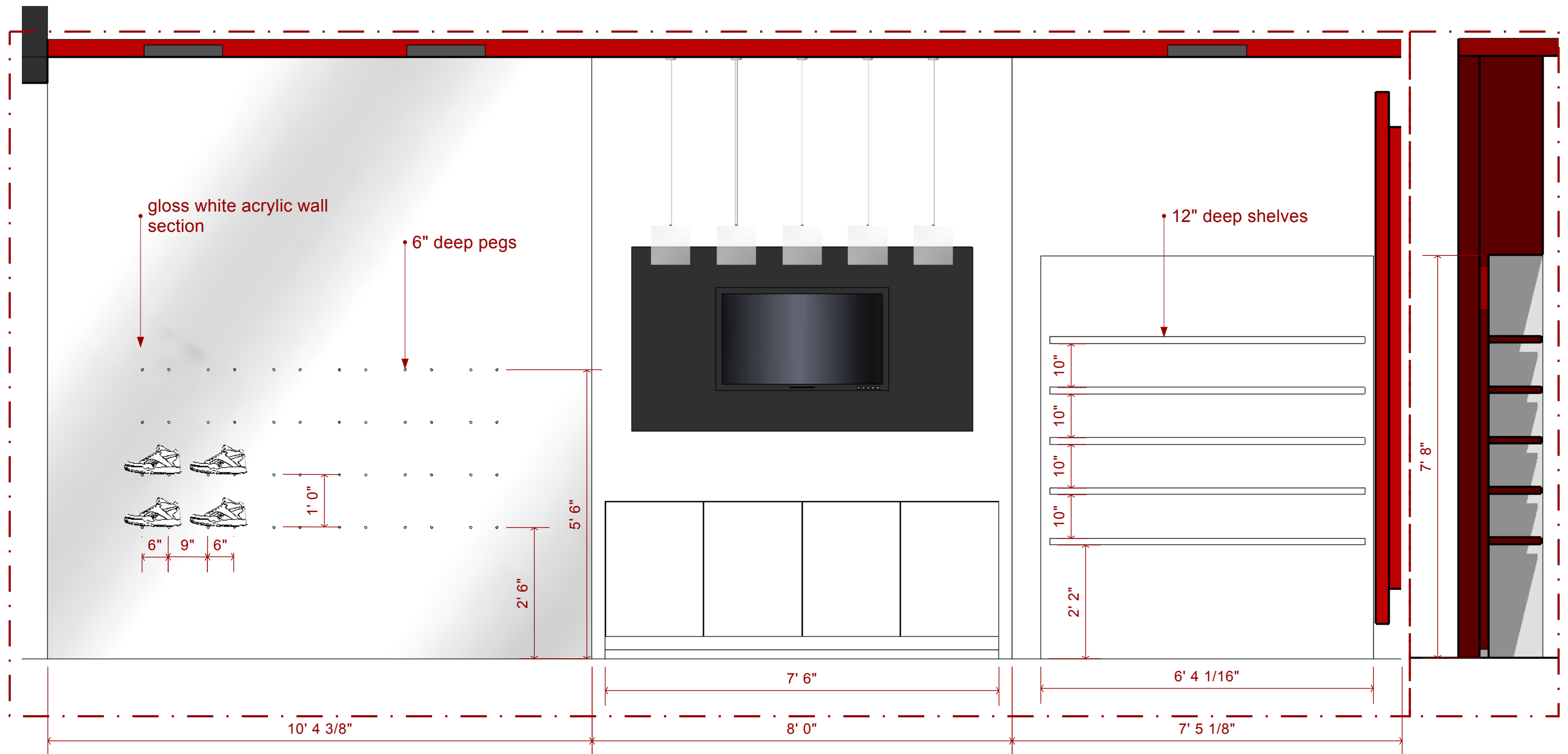
top view
scale: 3/4"



wall (behind cash wrap) elevation
scale: 1/2"



wall (behind cash wrap) section
scale: 1/2"



left elevation (detail) .
scale: 1/2"=1'-0"

section/apparel
scale: 1/2"=1'-0"